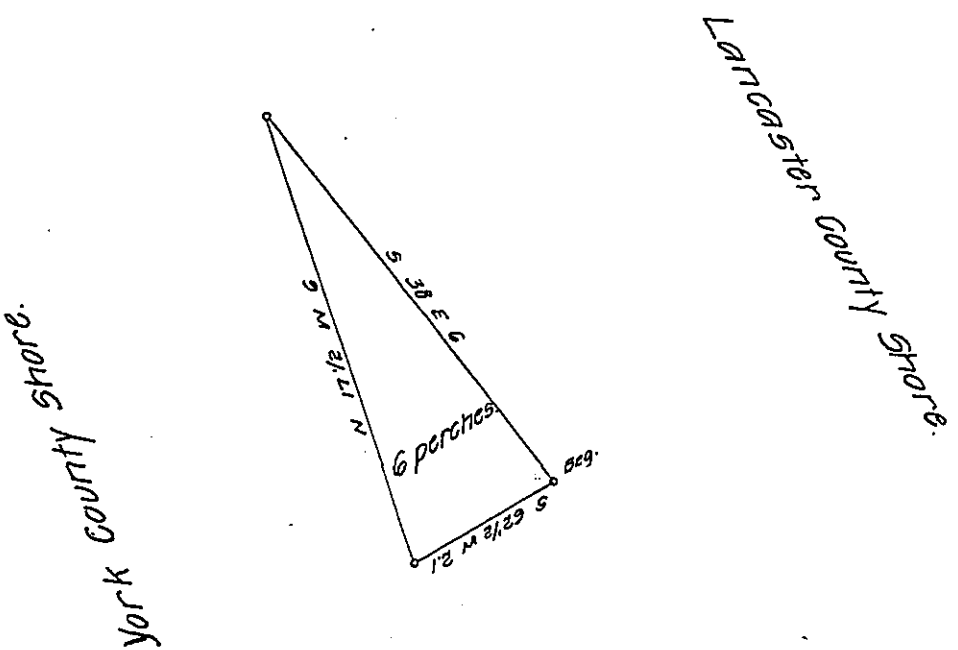


FORM No. 1.



A Draught of an Island situate in the river Susquehanna, Manor township Lancaster County Called Snipe Island Containing six perches Strict measure, lying a South west course from Christian Wisslers Islands, and a north east course from the Isle of Hopes about one quarter of a mile from John Wisslers main Shore, Surveyed in pursuance of a warrant dated the first day of January Anno Domini 1821 Granted to Benjamin Musser Jun^r.

Examined & Certified the 3^d. of May 1830

Henry Ob. penter

To Gabriel Hiester Esqr.

Pr. Jacob Hibshman. D.S.

Surveyor General.

IN TESTIMONY that the above is a copy of the original remaining on file in the Department of Internal Affairs of Pennsylvania, made conformably to an Act of Assembly approved the 16th day of February 1823, I have hereunto set my hand and caused the Seal of said Department to be affixed at Harrisburg, this thirtieth day of November 1907.

Henry H. H. H.
Secretary of Internal Affairs.